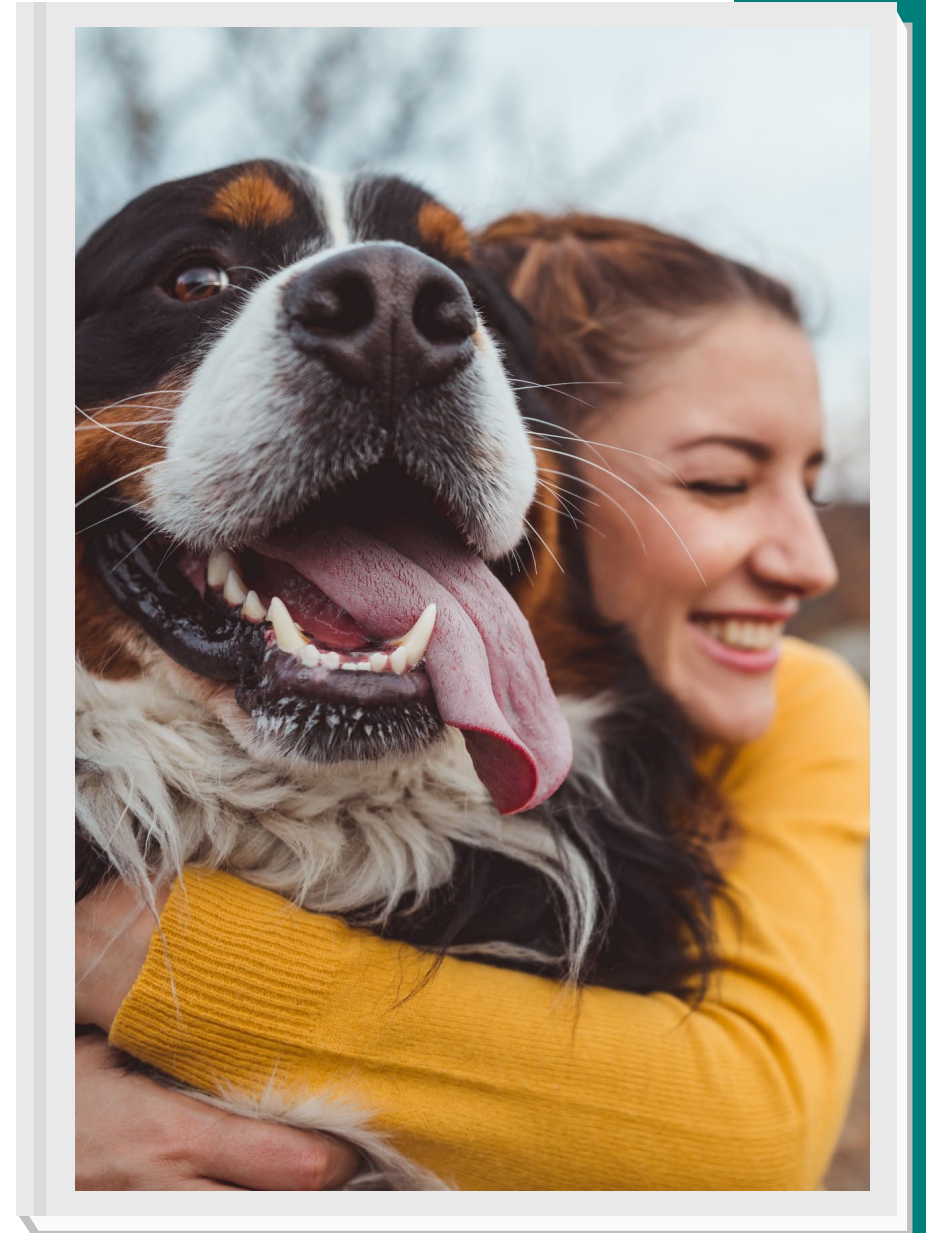




ACT (Awareness, Collaboration, Tools) To Keep Families Safe:

Innovative and Collaborative Strategies to Supporting Survivors of Gender-Based Violence and their Animals





Land Acknowledgement



Meet the ACT Team



Claire Dulude
ACT Project Coordinator



Sue O'Neill
ACT Project Manager

Reminders

- Language
- Animal Images
- Acknowledgement of Survivor Experience
- Group Safety & Self-Monitoring



Learning Outcomes

- Understand the strong link between animal violence and interpersonal violence
- Recognize the barriers to securing safe, affordable, and animal-friendly shelter or housing for survivors of gender-based violence and their animals as they occur in diverse communities
- Implement trauma-informed care for survivors of GBV and their animals
- Build cross-sectoral collaboration to support survivors of GBV with animals



What is Humane Canada?

Founded in 1957, Humane Canada, previously known as the Canadian Federation of Humane Societies, is Canada's federation of SPCAs and humane societies.

Vision

A humane Canada

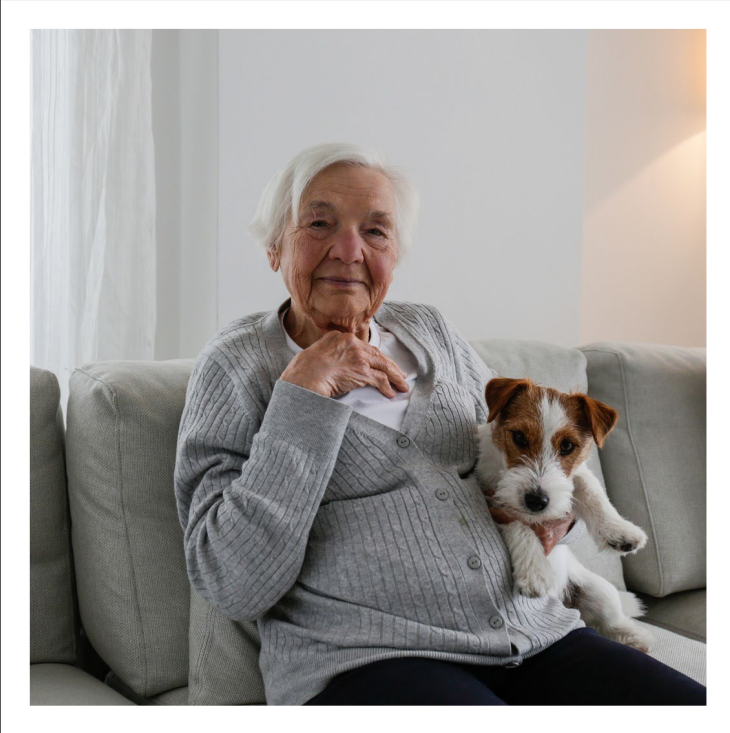
Mission

To drive positive progressive change to end animal cruelty, improve animal protection and promote the humane treatment of all animals.



Introduction the ACT Project

Rationale



60% of Canadian households include a dog or cat (2022)

A significant portion of survivors experiencing GBV confronts an inadequate system excluding survivors with animals

(Gray et al., 2019)

COVID-19 heightened the impact of this as pet adoptions and social isolation increased

(CBC, 2020)

The Violence Link

The strong link between animal violence and human violence

- Animals are often a primary source of support for survivors experiencing GBV.
- Aggressors use the human-animal bond to harm, intimidate and control their partners to be silent about their abuse.

(Campbell et al., 2018)

56% of survivors delayed leaving

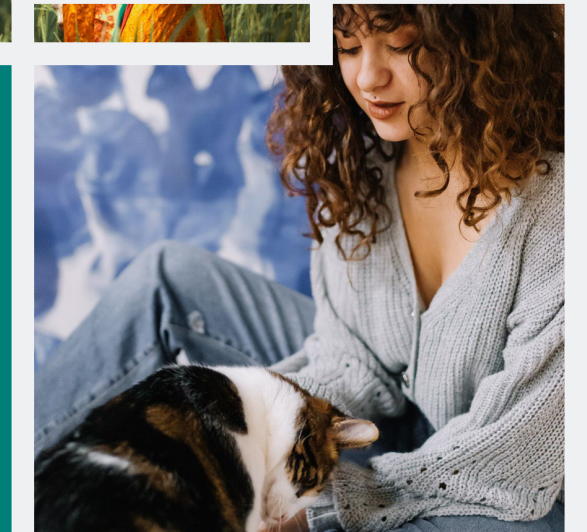
(Barrett et al., 2017)

1 in 3 considered returning

(Barrett et al., 2017);

1 in 8 survivors in Canada report experiencing threatened or enacted violence
against their animals

(Fitzgerald, et al., 2018)





ACT (Awareness, Collaboration, Tools) Project for Women with Animals Experiencing Gender-Based Violence

A three-year project funded by Women and Gender Equality (WAGE) to address systemic barriers to help-seeking, safety planning and support services for survivors with animals (companion, farmed, and service) experiencing Gender-Based Violence.



Thank You

Jasmine Ferreira, MSW (PhD Candidate)

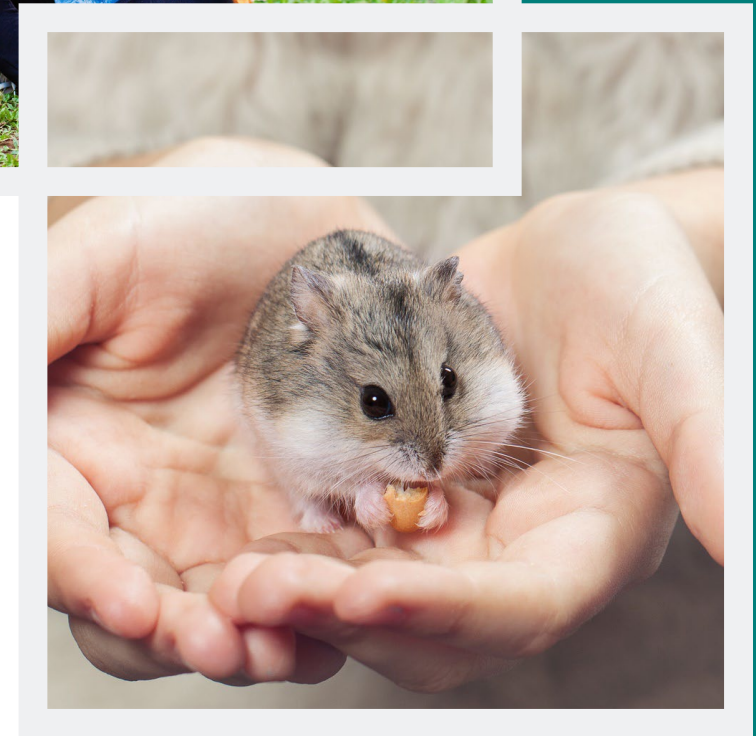
Andrea Ondrade, MSW

Dr. Amy Fitzgerald

Dr. Rochelle Stevenson

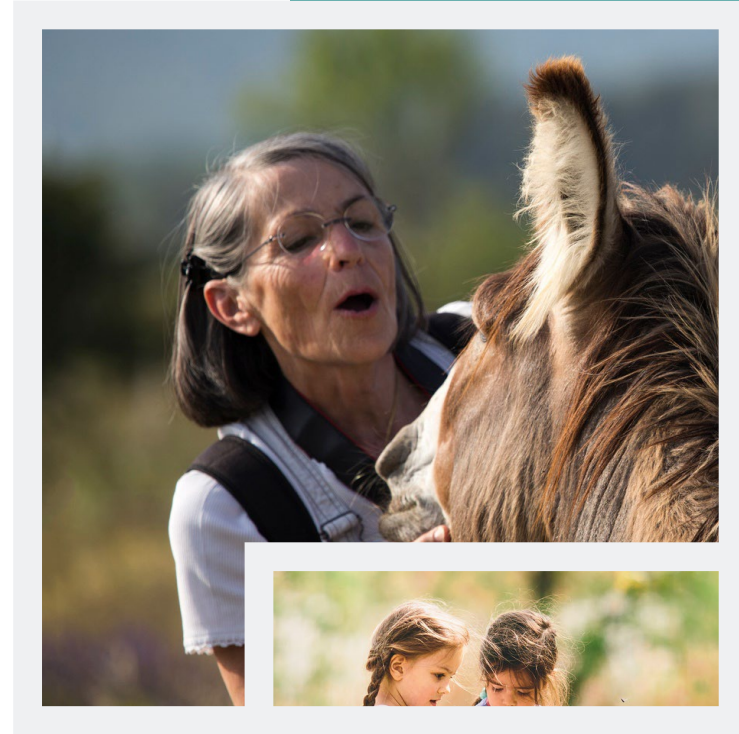
Dr. Kendra Coulter

Women & Gender Equality Canada (WAGE)

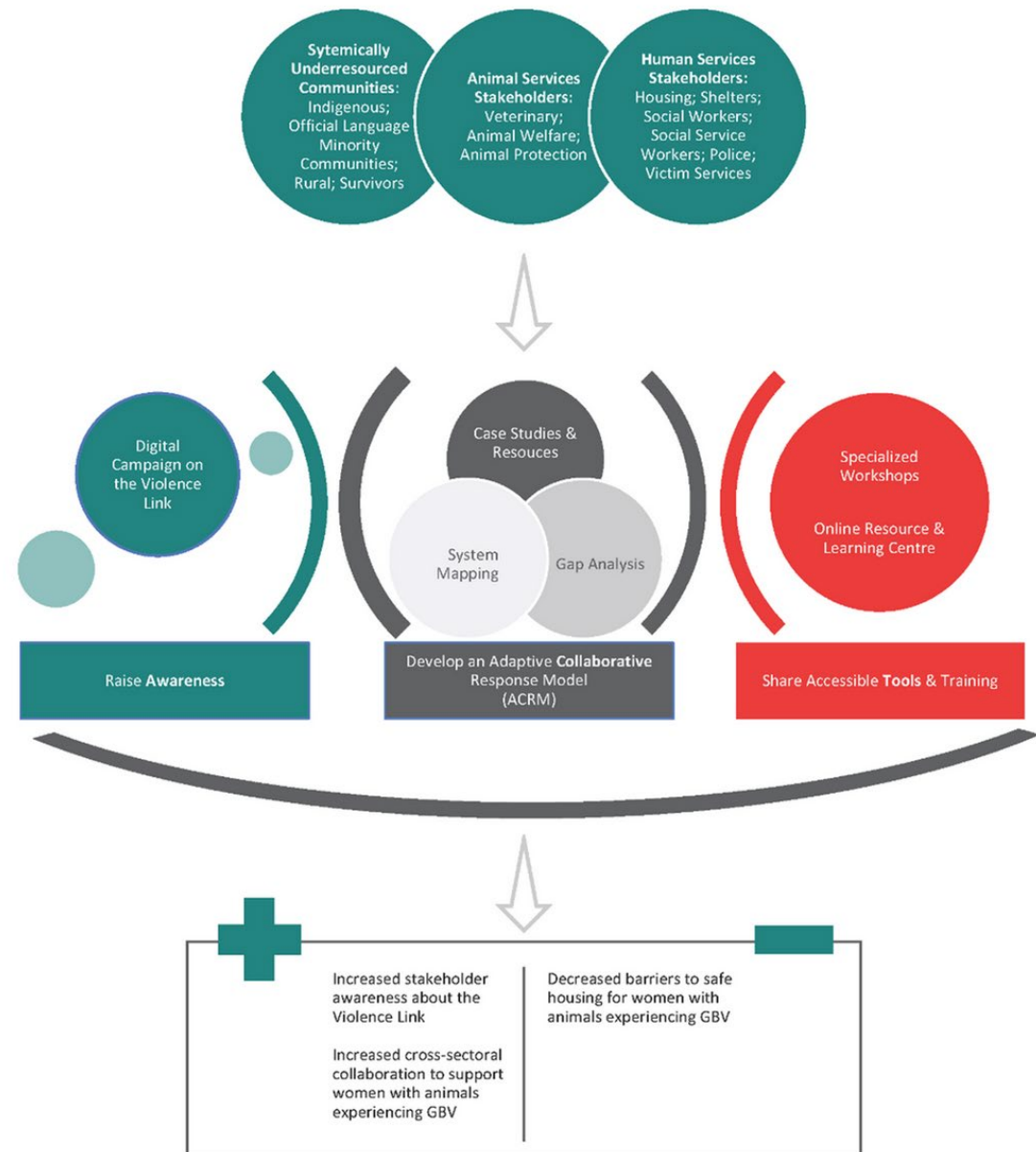


Project Objectives

- 1) Raise awareness and increase communication about the Violence Link among key sectors that engage with women experiencing GBV and safety planning.
- 2) Develop and implement an adaptable collaborative response model (ACRM) for animal-owning women experiencing GBV that can be adapted to underrepresented groups of women, including Indigenous, Survivors, OLMC and rural women.
- 3) Provide education, tools, resources and access to ACRM to sectors directly responding to women experiencing GBV, specifically an online learning centre and regional workshops.



Theory of Change



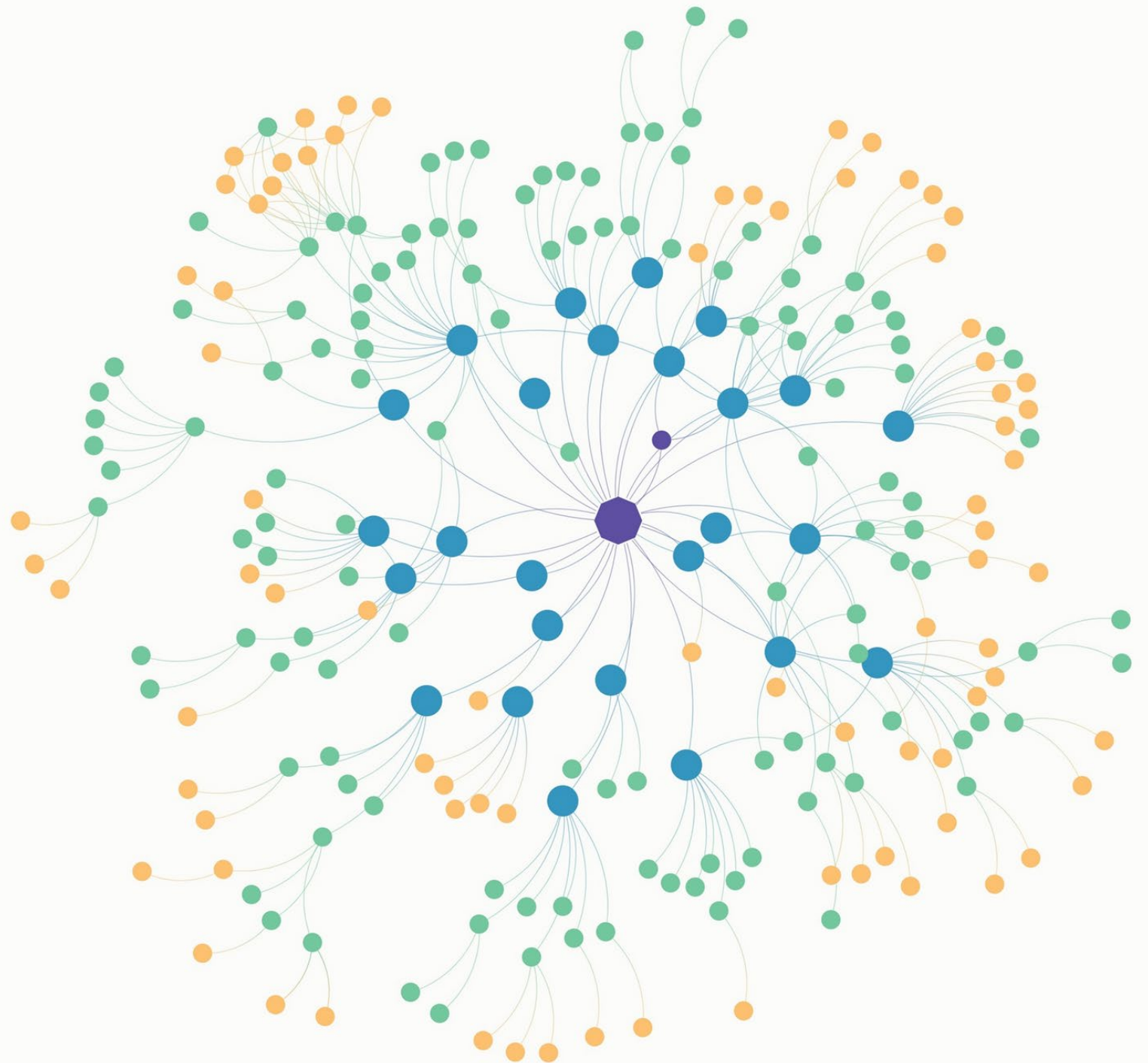
What did we learn from Lead Partner Roundtable?

- Need for Collaboration
- Community-Based Solutions



Social Network Analysis

Kumu

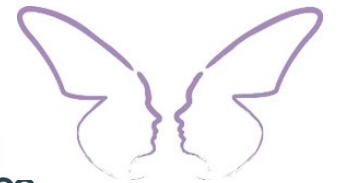
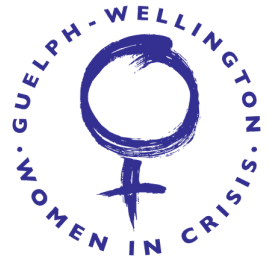




Women and Gender Equality Canada

Femmes et Égalité des genres Canada

Humane Canada® acknowledges and appreciates the contributions of the project partners for this project.



What did we learn from the Human & Animal Services Roundtables

- The Need For
 - Networking Opportunities
 - Education & Training
 - Resources for Service Providers & Survivors
 - Funding
 - Partnership & Collaboration Opportunities
 - Advocacy Tools
 - Awareness Raising

ACT

TO KEEP FAMILIES

SAFE

MODEL



HUMANE
CANADA.
ANIMAUX
CANADA.

ADAPTABLE
COLLABORATIVE
RESPONSE MODEL





Gender-Based Violence & Impact of Animals



Complexities of Leaving a Violent Relationship

FINANCIAL CONCERNS

ESCALATING VIOLENCE

ACCESSING SERVICES

CONCERNS – CHILDREN

BOND WITH ANIMALS



HUMANE
CANADA
ANIMAUX
CANADA

Barriers to Accessing Animal Friendly Shelter

Lack of on-site sheltering

Lack of animal safekeeping programs

Off-site sheltering is short-term

Separation from family members

Barriers for Finding Animal Friendly Housing

LACK OF A CLEAR STANDARDIZED NATIONAL
APPROACH TO INCLUSIVE HOUSING

DISCRIMINATION FROM LANDLORDS



Impact of Barriers



Delaying leaving or remaining in relationship



Exacerbated trauma for survivors and animals



Precariously housed or experiencing homelessness



Awareness



ADVOCACY



ENGAGEMENT & AWARENESS



Advocacy - Housing

- Federal Housing Advocate Submission
 - Research
 - Survivor voices
 - Organization feedback
- Local and community advocacy

Advocacy - Service Animals



- Creating accessible services for survivors
 - GBV Shelters
 - Accessible Housing
 - Fragmented & Confusing Legislation
- Clear Policies
- Need for Advocacy

Advocacy Tools & Resources



Advocacy Guide



Supporting Survivors with
Service Animals



Advocacy Resources Regarding
Housing

Awareness



Awareness Tools & Resources

SURVIVORS STORIES & SURVIVORS
QUOTES

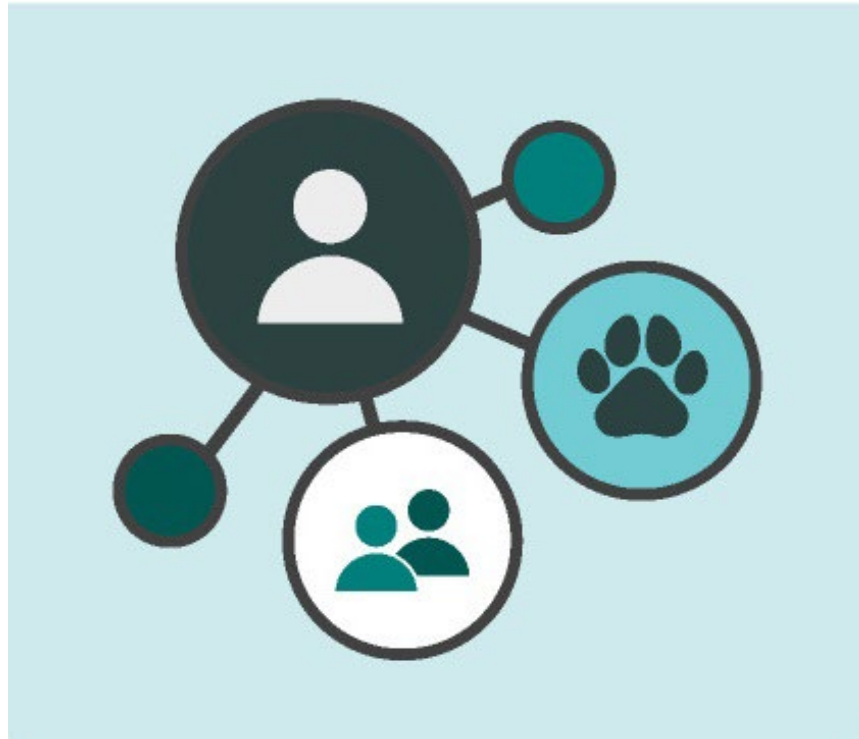
SOCIAL MEDIA TOOLKIT



A woman with long dark hair, wearing a maroon t-shirt, is sitting at a desk. She is smiling and looking at a laptop screen. A small, light-brown dog is sitting on the desk in front of her, looking towards the camera. The desk is cluttered with various items: a laptop, a notebook, a pair of glasses, a smartphone, and a dark-colored cup on a saucer. The background is a plain, light-colored wall. The entire image has a dark, semi-transparent overlay.

Collaboration

NETWORKS & PARTNERSHIPS



CASE STUDIES & STORIES



Importance of Collaboration

- Partnerships between Animal and Human Services
- This work cannot be done alone





Social Network Analysis: Top Partnership Priorities

- Animal Welfare
- Emergency Housing
GBV/VAW
- Animal Health Services
- GBV Survivor Communities
- Indigenous Communities

Collaboration Tools & Resources



Collaboration Guide



ACT to Keep Families Safe COP



ACT to Keep Families Safe
Newsletters



Case Studies

INTERVAL HOUSE
OTTAWA

CROSSROADS RESOURCE
CENTRE & WOMEN'S SHELTER

VANCOUVER HUMANE SOCIETY

PAWS FOR HOPE

BC SPCA

GENESIS HOUSE

PEI HUMANE SOCIETY

GUELPH-WELLINGTON
WOMEN IN CRISIS

REGINA TRANSITION SOCIETY

NATIONAL SERVICE DOGS

TORONTO HUMANE SOCIETY

BETHESDA HOUSE



Tools

TOOLS & TEMPLATES



EDUCATION & TRAINING

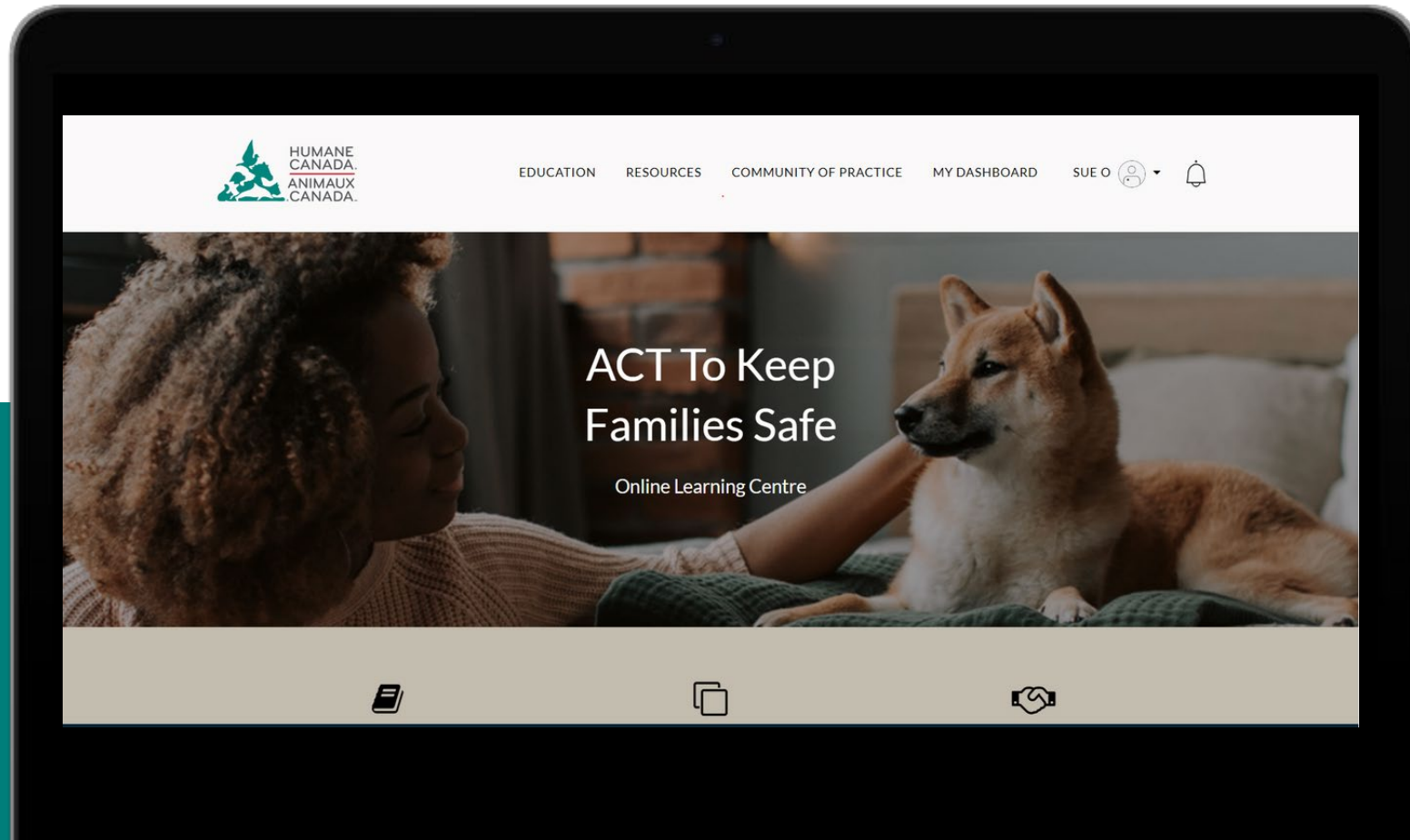


Attainable Actions

- Steps towards supporting survivors with animals
- Supporting survivors and their animals - being trauma-informed



ACT to Keep Families Safe Online Learning Centre





Educational Modules

THE VIOLENCE LINK & GENDER-BASED VIOLENCE

TRAUMA-INFORMED CARE WITH ANIMALS IN SOCIAL-SERVICE
SETTINGS: SUPPORTING SURVIVORS WITH ANIMALS

TRAUMA-INFORMED CARE IN ANIMAL-SERVICE SETTINGS:
SUPPORTING SURVIVORS WITH ANIMALS

CO-SHELTERING ON SITE

SHELTERING ANIMALS OFF SITE

SUPPORTING RURAL, REMOTE, NORTHERN & FARMING
COMMUNITIES



Educational Modules

SERVICE ANIMALS & DISABILITY RIGHTS

LEGAL CONCERNS & OWNERSHIP

AWARENESS, ENGAGEMENT & CONFIDENTIALITY

SELF-CARE, COMPASSION FATIGUE & SETTING BOUNDARIES

SUPPORTING INDIGENOUS SURVIVORS & COMMUNITIES

BONUS MODULE: LEARN ABOUT BETHESDA HOUSE'S ANIMAL
FRIENDLY GBV SHELTER



HUMANE
CANADA
ANIMAUX
CANADA

Resources, Tools & Templates

Information Sheets & Awareness Resources

Tools & Toolkits

Template Forms & Policies

Partner Resources



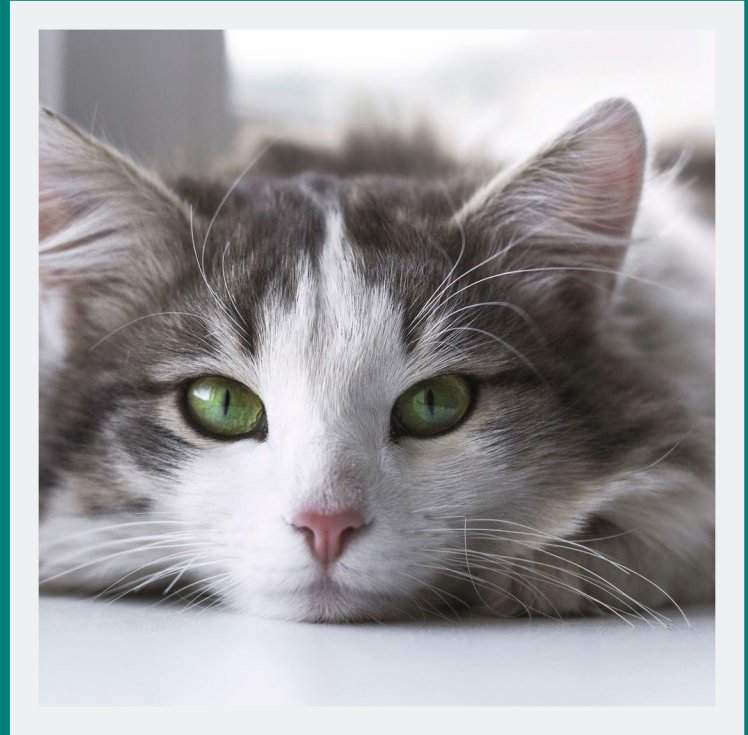
Conclusion



How to Get Involved...

humanecanada.ca/act-project

- Sign-up for the ACT Newsletter
 - A quarterly update on new resources, educational opportunities, and organization highlights
- Collaborate in the ACT To Keep Families Safe Community of Practice
- Check out the ACT TO Keep Families Safe Online Learning Centre:
 - Download resources, tools, and templates
- Participate in the online learning modules when they launch and share your feedback!





Promising Practices

Engaging Men and Boys as Allies in Preventing GBV Through Community-Based Humane Education Programming

Through this 30-month project, the Canadian Federation of Humane Societies (also known as Humane Canada) will collaboratively develop and put in place humane education programming to strengthen the GBV sector.

The project will identify, adapt, and pilot humane education initiatives that show promise in engaging young men and boys as allies in ending GBV.



Social Media



@Humanecanada



@HumaneCanada



Humane Canada



Humane Canada

If you follow us on social media, please let us know and we will follow your organization back!



Connect with the Team

Claire@humanecanada.ca

Sue@humanecanada.ca

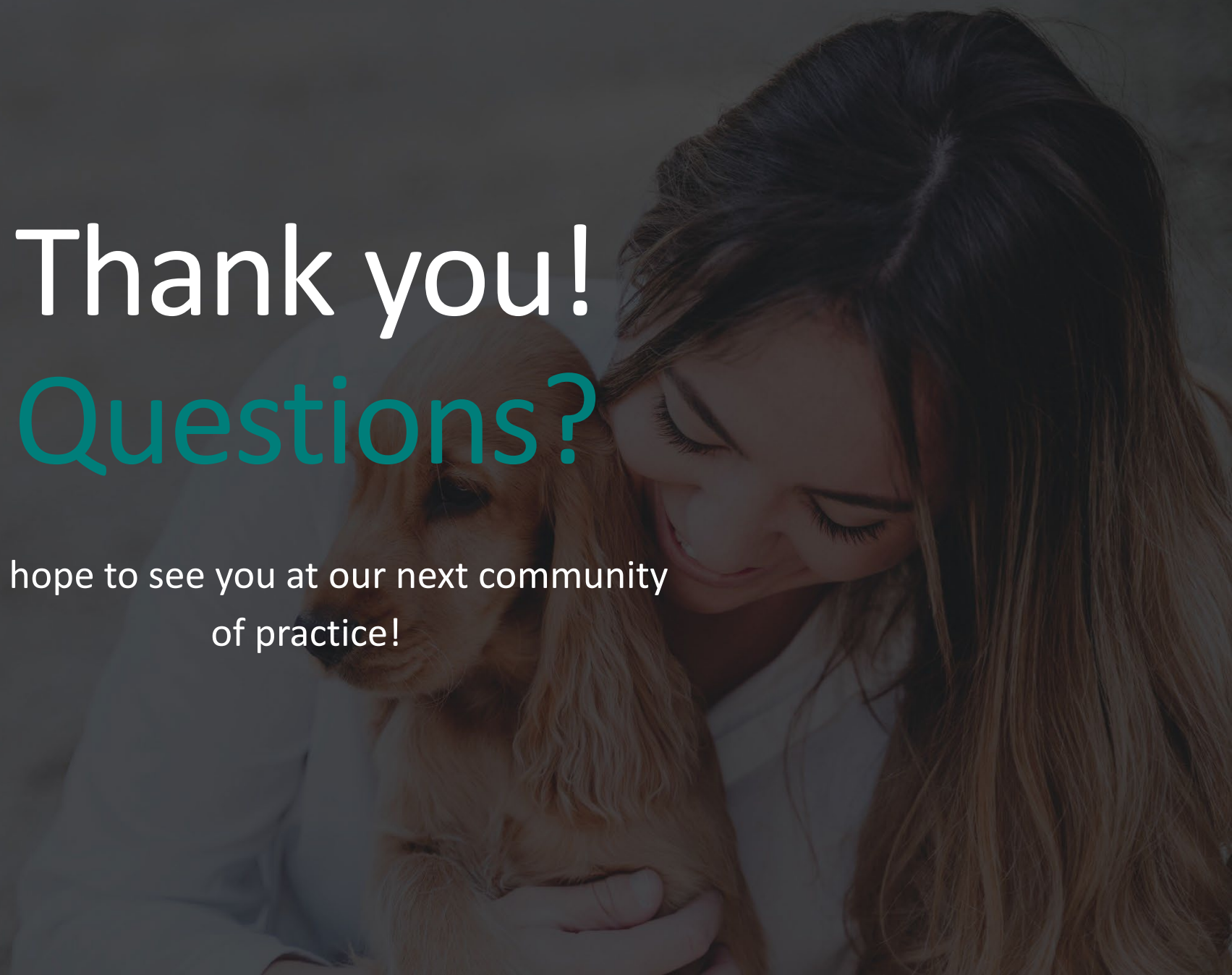




Thank you!

Questions?

We hope to see you at our next community
of practice!



References

Ascione, F. R., Weber, C. V., Thompson, T. M., Heath, J., Maruyama, M., & Hayashi, K. (2007). Battered pets and domestic violence: Animal abuse reported by women experiencing intimate partner violence and non-abused women. *Violence Against Women*, 13(4), 354–373. <https://doi.org/10.1177/1077801207299201>

Canada. Women and Gender Equality Canada. (2021). What is gender-based analysis plus? <https://women-gender-equality.canada.ca/en/gender-based-analysis-plus/what-gender-based-analysis-plus.html>

The Canadian Animal Health Institute (CAHI). (2023, May 3). 2022 - latest Canadian pet population figures released. <https://www.cahi-icsa.ca/fr/press-releases/2022-latest-canadian-pet-population-figures-released#:~:text=Not%20surprisingly%2C%20the%20survey%20results,least%20one%20cat%20or%20dog>

Cottafava, D. & Corazza, L. (2020). Co-design of a stakeholders' ecosystem: An assessment methodology by linking social network analysis, stakeholder theory, and participatory mapping. *Kybernetes*, 50, 836-858. <https://doi.org/10.1108/K-12-2019-0861>

Duane, A., Casimir, A. E., Mims, L. C., Kaler-Jones, C. & Simmons, D. (2021). Beyond deep breathing: A new vision for equitable, culturally responsive, and trauma informed mindfulness practice. *Middle School Journal*, 52, 4-14. <https://doi.org/10.1080/00940771.2021.1893593>

Fitzgerald, A. J., Barrett, B. J., & Gray, A. (2021). The co-occurrence of animal abuse and intimate partner violence among a nationally representative sample: Evidence of “The link” in the general population. *Violence and Victims*, 36(6), 770–792. <https://doi.org/10.1891/vv-d-19-00047>

Giesbrecht, C. J. (2021). Animal safekeeping in situations of intimate partner violence: Experiences of human service and Animal Welfare Professionals. *Journal of Interpersonal Violence*, 37(17-18). <https://doi.org/10.1177/08862605211025037>

Government of Ontario. (2018, November 19). Residential Tenancies Act, 2006, S.O. 2006, c. 17. Ontario.ca. <https://www.ontario.ca/laws/statute/06r17>

Gray, A., Barrett, B. J., Fitzgerald, A., & Peirone, A. (2018). Fleeing with Fido: An analysis of what Canadian domestic violence shelters are communicating via their websites about leaving an abusive relationship when pets are involved. *Journal of Family Violence*, 34(4), 287–298. <https://doi.org/10.1007/s10896-018-0023-z>

Hess, A. (2001). *Concepts of social stratification: European and American models*. Palgrave.

References

Hess, A. (2001). Concepts of social stratification: European and American models. Palgrave.

Humane Canada. (2020, July). The Violence Link Review of the Literature. <https://humanecanada.ca/wp-content/uploads/2020/07/Review-of-the-Violence-Link-Literature-.pdf>

Lindsay, S. M. (2022). The “problem” of Multispecies Families: Speciesism in emergency intimate partner violence (IPV) shelters. *Social Sciences*, 11(242), 1–14. <https://doi.org/10.3390/socsci11060242>

Matsuoka, A., & Sorenson, J. (2022). Inclusive approaches by VAW shelters: Respecting women's choice to be together with Companion Animals. *Affilia: Feminist Inquiry in Social Work*, 1–17. <https://doi.org/10.1177/08861099221097758>

Morrison, A., Gilliland, F., MacGregor, N., Lopez, M., Israel, D., Carolin, J. & Zellars, R.(2022). Leading with abundance: Transformative justice as a framework for change [Webinar].WomenatthecentrE.

National EMS for Children Data Analysis Resource Center. (2021). An instruction manual: Tools and processes for conducting a remote SWOT analysis. https://www.nedarc.org/workshops/materials/documents/FINAL_RemoteSWOTProcessInstructionManual051121.pdf

Qiu, J. X. J. & Rooney, D. (2019). Addressing unintended ethical challenges of workplace mindfulness: A four stage mindfulness development model. *Journal of Business Ethics*, 157, 715-730. <https://doi.org/10.1007/s10551-017-3693-1>

Riggs, D. W., Taylor, N., Signal, T., Fraser, H., & Donovan, C. (2018). People of diverse genders and/or sexualities and their animal companions: Experiences of family violence in a binational sample. *Journal of Family Issues*, 39(18), 4226–4247. <https://doi.org/10.1177/0192513x18811164>

Ríos, J.F., Sanchez, T., & Terrassa, N. (2023, March 21-23). Animals in Permanent Supportive Housing in Spain [Plenary Address]. Co-Sheltering Conference 2023.